

crescendo

Building for Our Future, Together.



Capital
Campaign



Princeton
Montessori
Society



Annual
Campaign



2008
Kickoff

Our Capital Campaign

Ensuring the future sustainability of Princeton Montessori School

introducing **crescendo**

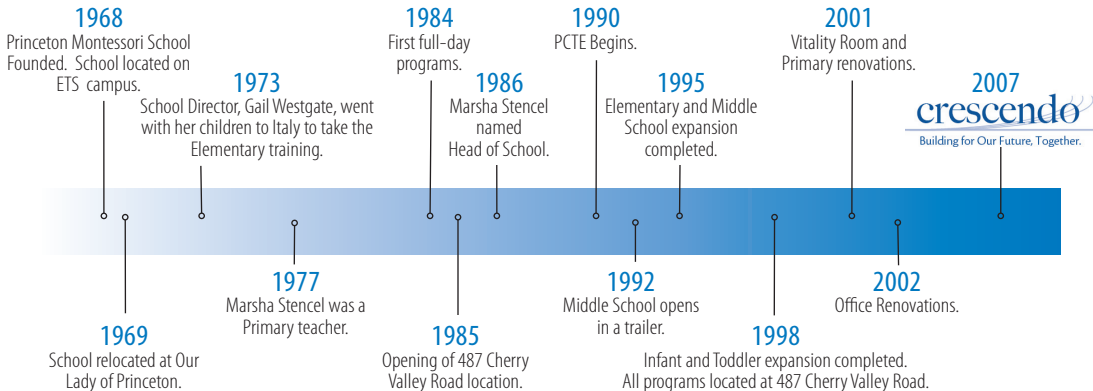
Building for Our Future, Together.

what

A three-year campaign with a \$2,000,000 goal to build an unrestricted endowment

why

To secure the long-term future and sustainability of Princeton Montessori School



Our Annual Campaign

Continuing to keep our school progressive

picture my world



support

- Professional conferences for teachers
- Facility renovations
- Junior I Musical, Junior II Opera, and Middle School Dinner/Theatre
- Playground equipment; outdoor enhancements
- Program materials

Go to www.princetonmontessori.org/development for a complete listing of designated gifts

Art Studio!

Size: 34' x 56'

- Studio dedicated to artistic expression of children
- Larger space than current art room with ample storage, kilns & supplies
- Flooring that compliments the work of our artists
- Windows face view of nature and working patio
- Patio workspace outside studio with natural rock water garden

Multi-purpose Room!

Size: 36' x 41'

- Almost 2x the size of the current Pine Room
- Parent and faculty in-service area
- Additional break-out spaces for Junior I, Junior II, Middle School
- Lunch area
- Alternative entry via outside passageway

Additional Classroom!

Size: 30' x 30'

- One classroom addition for Middle School & Junior II area



Cultural Arts Wing!

Size: 80' x 84'

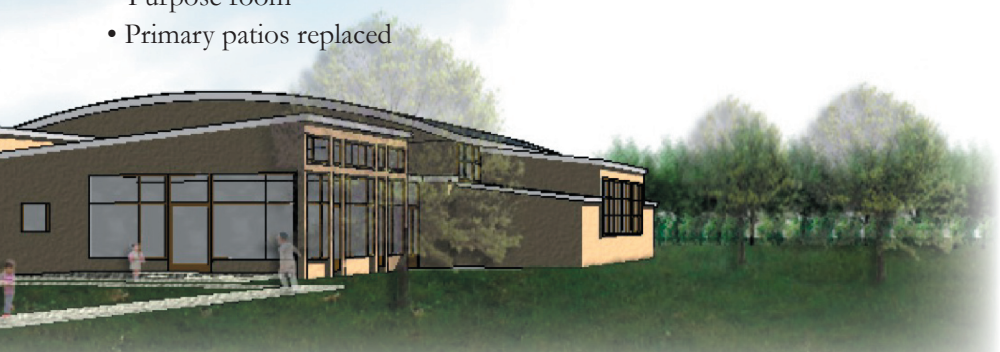
- Music and performances; fitness and physical activities
- Large group gatherings and events
- Stage, audio, lights, and curtains
- Area for event catering and student cooking activities
- Storage for materials and chairs
- Two bathrooms and utility closet

Outdoor Enhancements!

- Rock garden with waterfall near art studio
- Move trees in the back to open play area
- Adding appropriate equipment for Junior I - Middle School students
- Patio area extends behind Multi-Purpose room
- Primary patios replaced

Middle School and Elementary Renovations!

- Panorama Library moved to Pine Room
- Current Panorama space dedicated to personal breakout rooms for Middle School
- Entrance “just” for Middle School students
- Dedicated space in Middle School entrance for student’s belongings
- Current Art Room/Before/After-School Room becomes additional break-out space for Junior I in addition to being used for Before/After School
- Doorway in Junior I hallway, near current art room
- New environment feels like a “Junior I wing”



Our Capital Campaign

Ensuring the future sustainability of Princeton Montessori School

what is our endowment?

An unrestricted endowment supports:

- Financial sustainability
- Faculty salaries, benefits, and development
- Tuition assistance
- Unrestricted future needs

Construction begins Winter 2008!

Anticipated completion Fall 2008-Spring 2009

Four Easy Ways to Make a Contribution

crescendo

Building for Our Future, Together.

contact:

Karen Spring
Director of Development
at kspring@pmonts.edu or
609-924-4594 ext. 233

match:

Remember that you may be able to give a greater gift by taking advantage of your employer's corporate matching gift program. Go to www.case.org to see if your company has a gift matching program.

mail:

Send a pledge to:
Princeton Montessori Society
Development Office
487 Cherry Valley Road
Princeton, NJ 08540

call:

Call the school during our Telethon on December 3rd between 6:00 and 8:00 PM to make a pledge.

Trustee Telethon

Mark your calendar

for December 3rd 6:00 and 8:00 PM

Win valuable prizes!

*One generation plants the trees;
another gets the shade.*

*Keep a green tree in your heart,
and perhaps a singing bird will come.*

– Chinese proverb



crescendo
Building for Our Future, Together.

Princeton Montessori Society

487 Cherry Valley Road Princeton, NJ 08540

609-924-4594 www.princetonmontessori.org